

MAJOR TECHNICAL SPECIFICATIONS

Models	DSA - 6	DSA - 20
HF X-Ray Generator		
■ Max Power Output	6 KW	20 KW
■ Fluoro / Radiographic KV	40 to 120 KV	40 to 120 KV
X-Ray Tube	Rotating Anode High Powered X-Ray Tube	
Imaging Chain	High resolution 1K x 1K imaging system with medical grade monitors.	
Power Requirement	230 V AC \pm 10% (model specific \pm 20%), 50Hz, 15A (or as per voltage / frequency available), single phase, independent earthing.	



ALLENGERS MEDICAL SYSTEMS LTD.

S.C.O. 212-213-214, Sector 34-A, Chandigarh-U.T. 160 022 (India)

DOMESTIC SALES :

Ph : +91 172 6618000-99, 2621913 Fax : +91 172 2621912 E-mail : sales@allengers.net

INTERNATIONAL SALES :

Ph : +91 172 6618081, 6618082 Fax : +91 172 2621912 E-mail : exports@allengers.net

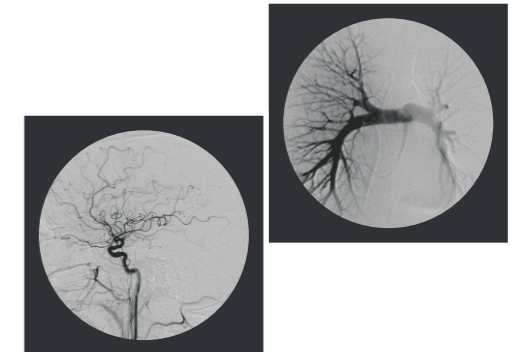
Please visit www.allengers.com for more information Toll Free No. 1800-266-8800 (India)

For detailed technical specifications, please refer to the respective product data sheets / quotation.
Due to continuous product improvements, specifications and appearance are subject to change without prior notice.

AMSL/VOL-2(01/16)

Allengers

Passion for excellence



Ergonomic Design
..... Superb Performance

Angio Scan Series



ABOUT US

Welcome to the world of Allengers, a world that understands your needs, a world that actually cares. Allengers, an Indian MNC, National Award Winner - Quality Products from the Prime Minister of India, is a leading manufacturer covering a wide spectrum of medical diagnostic equipments.

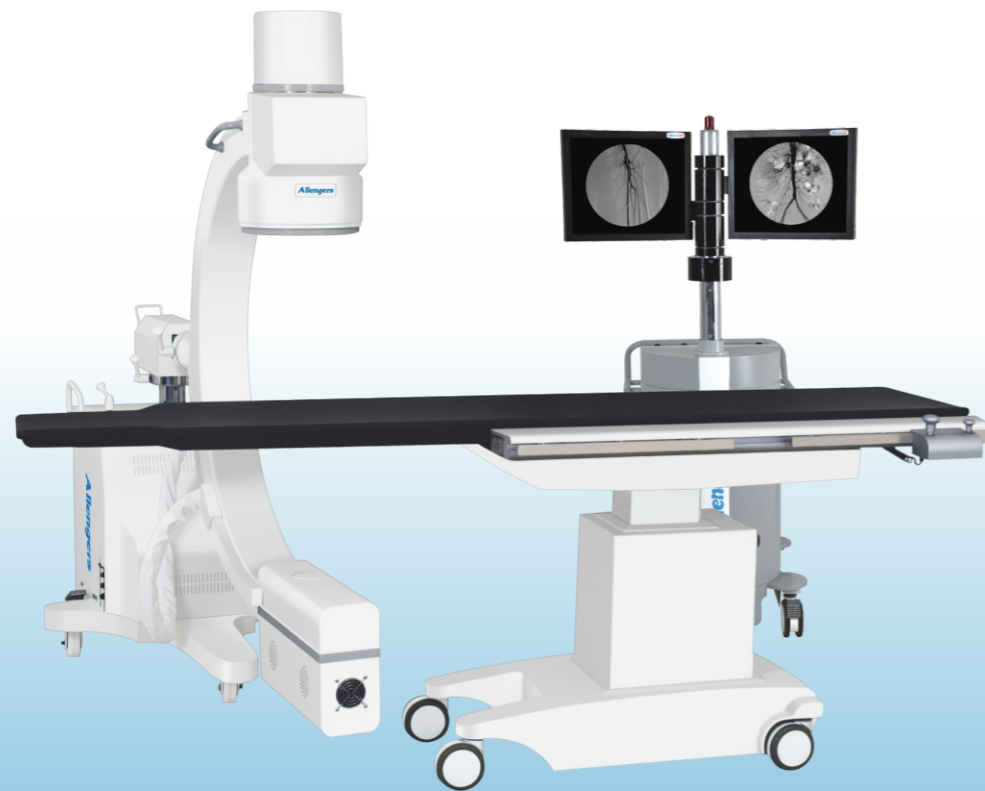
We export our product range to more than 70 countries across the globe.

DSA - 6 / 20

Allengers, DSA - 6 / 20 is a Digital Subtraction Angiography system which uses latest high frequency X-Ray generator specially designed for interventional procedures like DSA.

ADVANTAGES

- Latest HF X-Ray generator specially designed for interventional procedures.
- High resolution imaging system with 1K x 1K imaging chain.
- Fine digital images with detailed information and superb contrast for sure shot diagnosis.
- Low dose system with Automatic Dose Rate Control (ADRC).
- High powered X-Ray generator and X-Ray tube.
- Full networking capabilities.



Digital Subtraction Angiography system with radiolucent table top and automatic pressure injector

DSA-6/20

MAJOR TECHNICAL SPECIFICATIONS WITH UNMATCHED ADVANTAGES

Imaging Chain:

- 9"/12" triple field, image intensifier having high contrast meant specially for neuro & vascular imaging .
- Excellent image quality with 1K x 1K imaging chain.
- Fine digital images with detailed information and superb contrast for sure shot diagnosis.
- Digital image processor with direct hard disk recording.
- Real time on line DSA capabilities with real time subtraction, road mapping, peak opacification, edge enhancement, zoom, contrast, brightness, variable frame rate / sec.

Low Dose:

- The system offers sharp images at low dose in all interventional vascular applications.
- Automatic Dose Rate Control (ADRC).

Full Networking Capabilities:

- DICOM 3.0 ready system.
- Designed for clinical data management / archival.
- Compatible with PACS / RIS / HIS.

X-Ray Generator:

- 6/20 KW High powered X-Ray generator (designed for continuous single, multi-pulse and digital cine image acquisitions).

X-Ray Tube :

- High powered rotating anode dual focus X-Ray tube.

High Contrast Monitors :

- Two nos. 19" (LCD) medical grade monitors for superb diagnostic image quality.

Collimation :

- Iris Collimator / Parallel shutter to minimize X-Ray dose to patient and physician.

Space Saving Design:

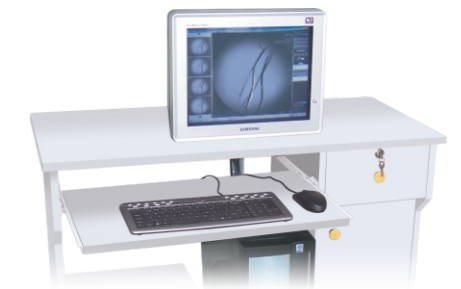
- 15 ft. x 15 ft. floor space.

Optional Accessories at an Additional Cost:

- Angiography table with radiolucent floating table top (carbon fibre).
- Automatic pressure injector.
- Angio view workstation with printer.
- Quantification Coronary Analysis (QCA).
- Aprons and thyroid collars.
- Compatible voltage stabilizer.
- Haemodynamic monitor.

Special Interventional Table with

- Head low, head high tilt
- Lateral tilt
- Motorized table top movements



Angio View Workstation



Proposed Layout